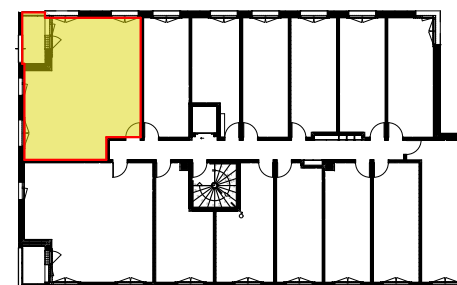


20 rue David Ferrand - 76100 ROUEN

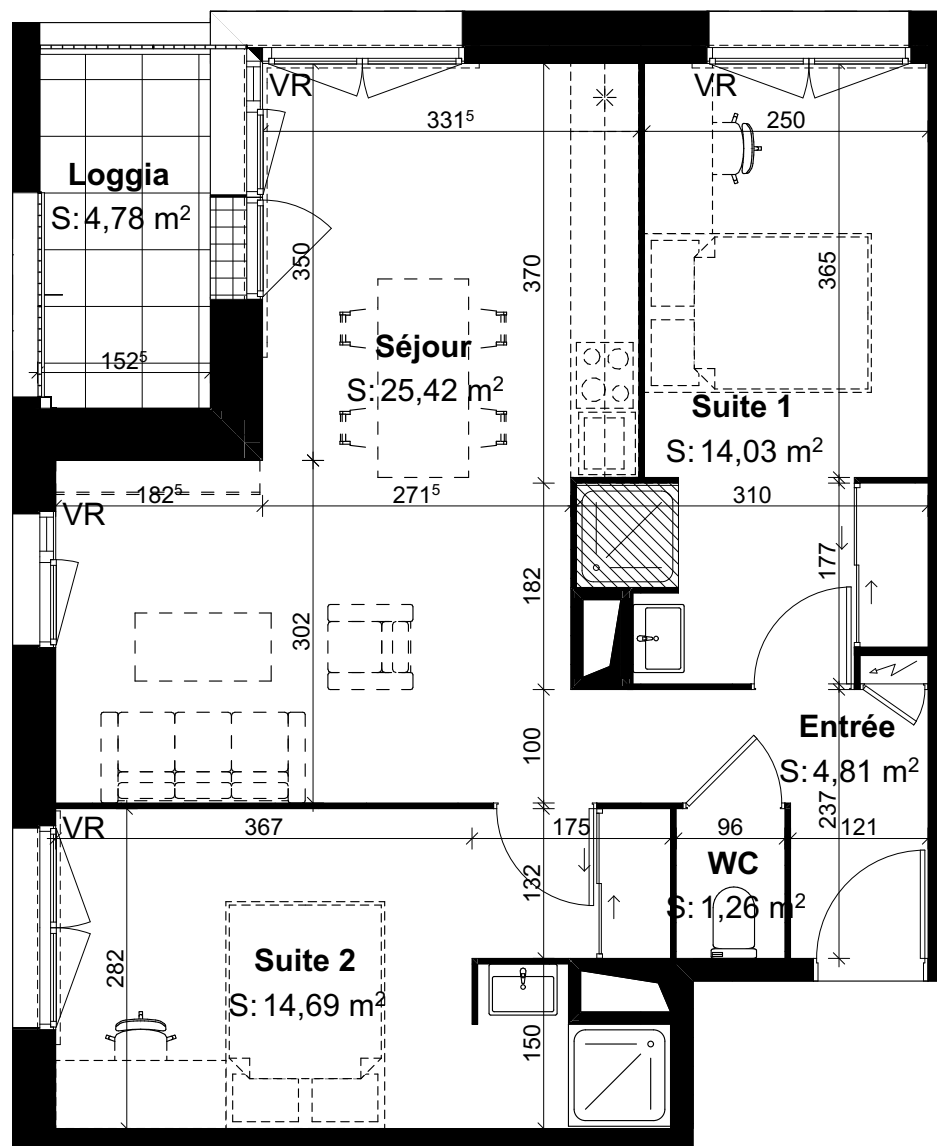
Pierre de Seine  
SNC Reverso Mathilde

Logement  
n° 113 - T3

Surfaces habitables en m<sup>2</sup>

Entrée	4,81
WC	1,26
Séjour	25,42
Suite 1	14,03
Suite 2	14,69
	<b>60,21 m²</b>

Loggia	4,78
	<b>4,78 m²</b>



Date : 11/06/2025